

FAMILY CONNECTION FROM NAVIANCE

Hingham High School—February 6, 2014

Family Connection

- Web-based program designed for students and parents
- Contains a wealth of information on careers and colleges
- Presents information specific to Hingham High School
- Serves as a means of communication between families and school counselors

family connection

home

colleges

careers

about me

pages

No custom pages or links are available at this time.

what's new

- You received an e-mail: [USA GAP Year Fairs](#) from Heather Rodriguez.
- You received an e-mail: [MEFA FINANCIAL AID SEMINAR](#) from Erin Krall.
- You received an e-mail: [FIRST TERM REPORTS](#) from Erin Krall.

[more since last visit](#)

You have [18 new messages](#)

[document library](#)

[contact us](#)

General Welcome

Welcome to Hingham High School's Family Connection site. You will find a wealth of information about careers and colleges here. If you have any questions or if you would like more information please do not hesitate to contact your school counselor.

Hingham High School

17 Union Street
Hingham MA 02043-2523
p: (781) 741-1560



Career Exploration

- Explore careers by career cluster
- Research specific job duties, appropriate majors and earning potential
- Watch videos about specific jobs
- Complete personality type survey and career interest inventory

Career clusters are a way of grouping careers with common features and skills. Careers grouped into the same education and training. Exploring clusters can be a useful way to find a good career match, especially if you have sure what specific careers match those interests. Career clusters can also help you better understand how your you for certain types of careers.

Click on a career cluster to explore:



[Agriculture, Food and Natural Resources](#)



[Arts, Audio/Video Technology and Communications](#)



[Education and Training](#)



[Government and Public Administration](#)



[Hospitality and Tourism](#)



[Information Technology](#)



[Manufacturing](#)



[Science, Technology, Engineering and Mathematics](#)



[Architecture and Construction](#)



[Business Management](#)



[Finance](#)



[Health Science](#)



[Human Services](#)



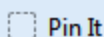
[Law, Public Safety, Corrections and Security](#)



[Marketing](#)



[Transportation, Distribution and Logistics](#)



family connection

home

colleges

careers

about me

search for careers:

Go

MORE SEARCH OPTIONS >>

explore
career clusters:

Choose another cluster or pathway: -- select --

explore careers

> [favorite careers & clusters](#)> [explore careers & clusters](#)

what are my interests?

> [personality type](#)> [cluster finder](#)> [career interest profiler](#)

Health Science

+ Add this cluster to your list

Health Science + ADD

Biotechnology Research and Development + ADD

Diagnostic Services + ADD

Health Informatics + ADD

Support Services + ADD

Therapeutic Services + ADD

Overview

Credentials

Related Careers

Related

Overview

There are thousands of challenging educational and training world of Health Science. Learners need a solid background and technical skills. Education and training can be obtained two-year community colleges, four-year colleges, apprentices schools/institutes.

Along the way, career guidance professionals assist learners with their goals, interests, abilities and skills to facilitate a good match of educational options. Learners participate in relevant educational opportunities within the cluster. They gain knowledge and skills through coordinated activities such as site visits, job shadowing and internships. If they choose, they can obtain certifications that lead to employment. Colleges and universities

College Search

- Explore and research colleges
- Complete college searches
- View college maps
- View scattergrams with acceptance data (GPA and test scores) specific to Hingham High School
- View acceptance history specific to Hingham High School

family connection

- home
- colleges**
- careers
- about me

search for colleges:

MORE SEARCH OPTIONS >>

resources

- > [test scores](#)

my colleges

- > [colleges I'm thinking about](#)
- > [colleges I'm applying to](#)

Upcoming college visits
No upcoming visits.

college research

- > [SuperMatch™ college search](#)
- > [college match](#)
- > [college compare](#)
- > [college lookup](#)

- > [college resources](#)
- > [college maps](#)
- > [scattergrams](#)
- > [acceptance history](#)

search for colleges:

Go

MORE SEARCH OPTIONS >>

University of Massachusetts, Amherst :: Amherst, MA :: U.S.

[back to college profile](#)

Test type: SAT (1600 scale)

my colleges

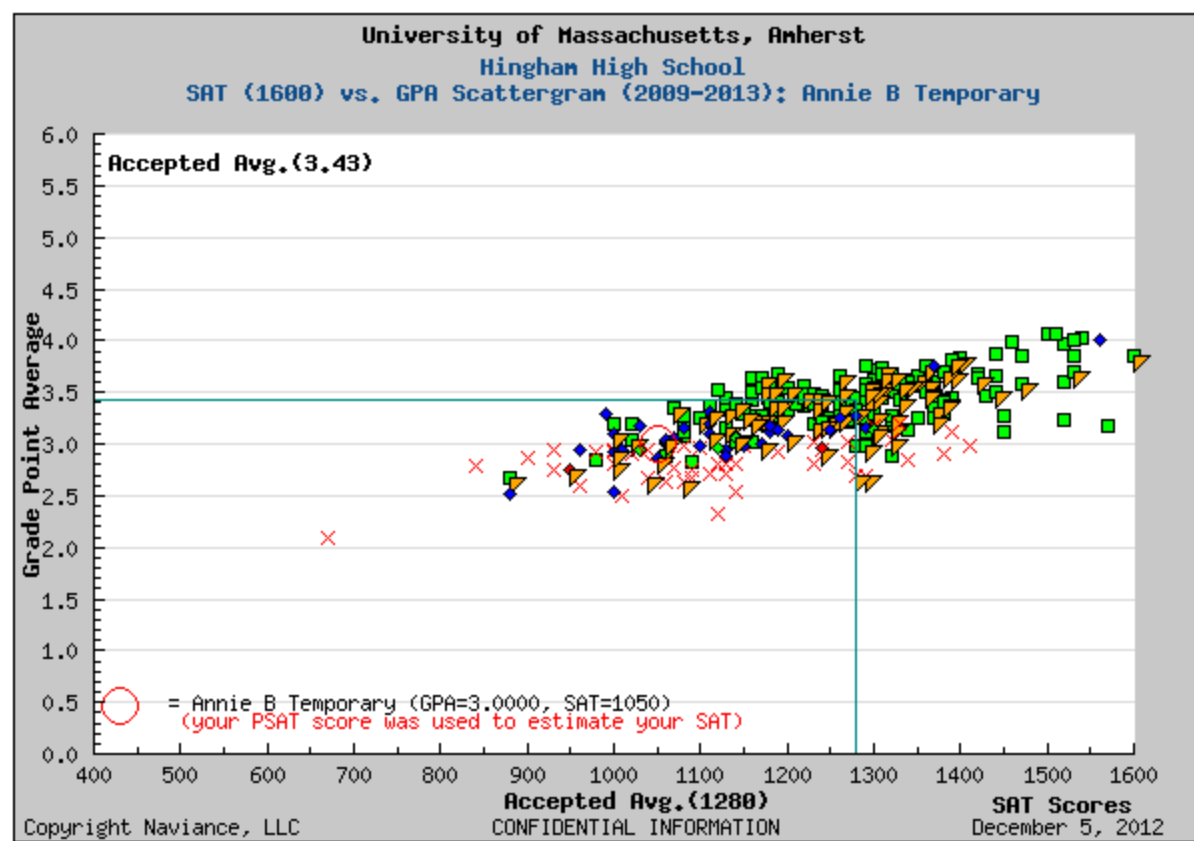
- > [colleges I'm thinking about](#)
- > [colleges I'm applying to](#)
- > [college visits](#)

college research

- > [SuperMatch™ college search](#)
- > [college match](#)
- > [college compare](#)
- > [college lookup](#)
- > [college search](#)
- > [college resources](#)
- > [college maps](#)
- > [scattergrams](#)
- > [acceptance history](#)

resources

- > [test scores](#)



Graph Legend